

Bayside Netball Centre

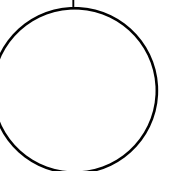
WGE Specialist Lighting Preliminary Concept Report

Date: 26.06.2019 | Revision 001-D



Lighting Concept:

- Netball Courts
- Car Park & Landscaping





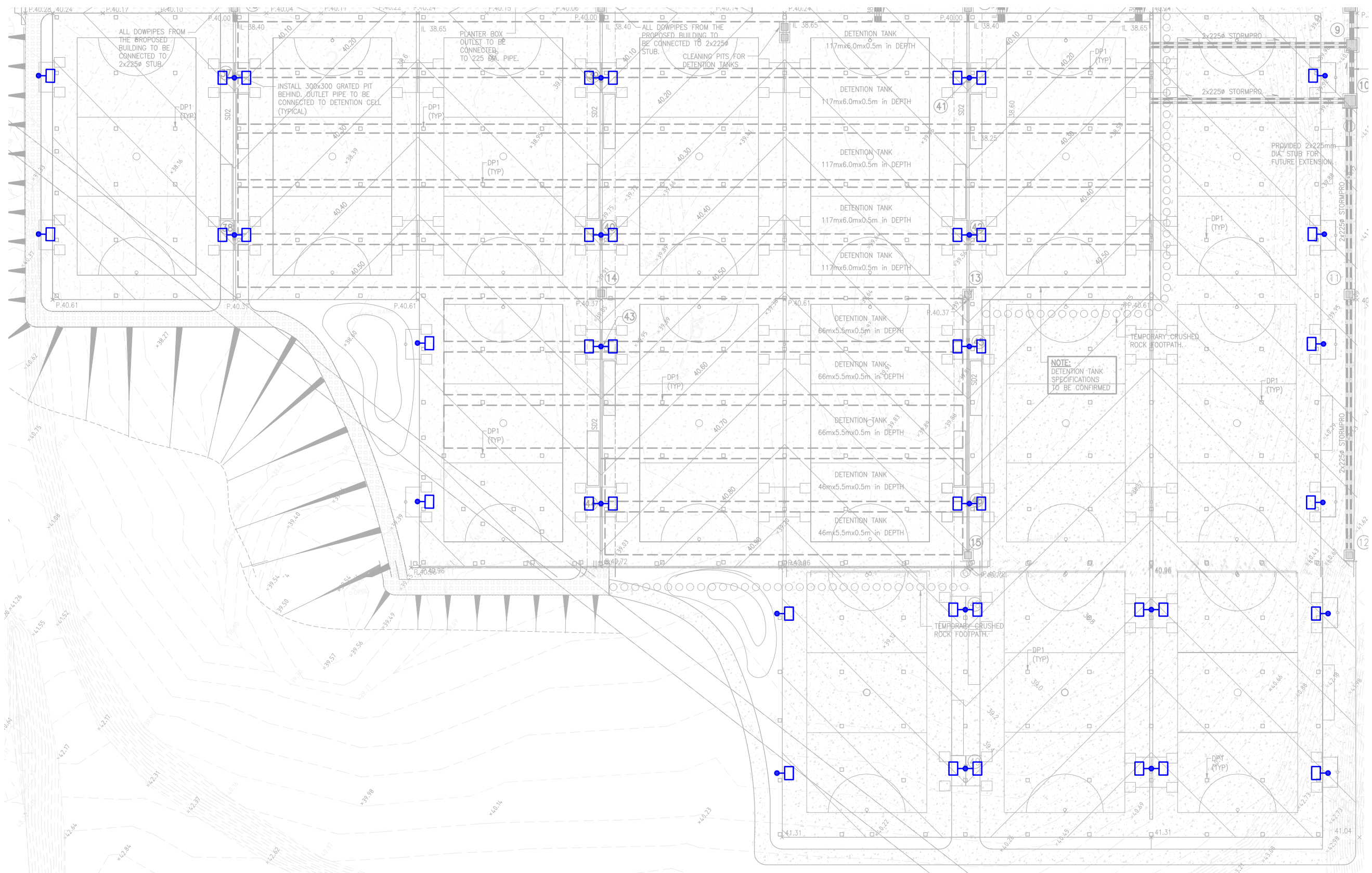
Netball Courts

Bayside Netball Centre

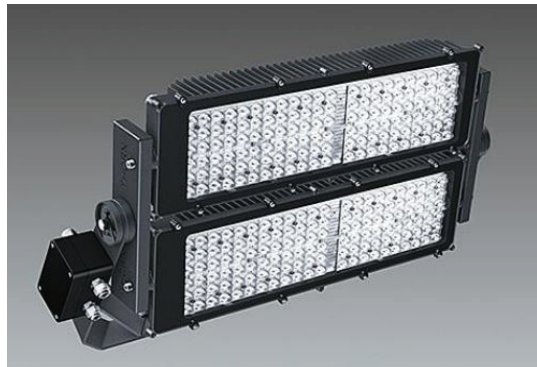
The logo for Wood & Grieve Engineers, featuring a stylized 'WG' monogram above the company name 'WOOD & GRIEVE ENGINEERS' in a bold, sans-serif font.

no.4

Specialist Lighting Concepts



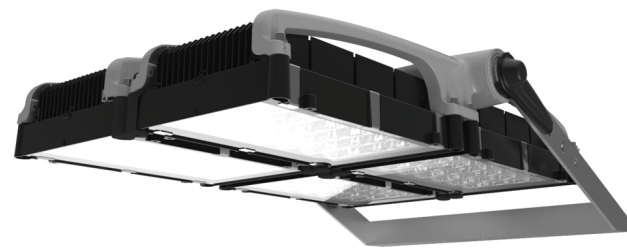
Bayside Netball Centre



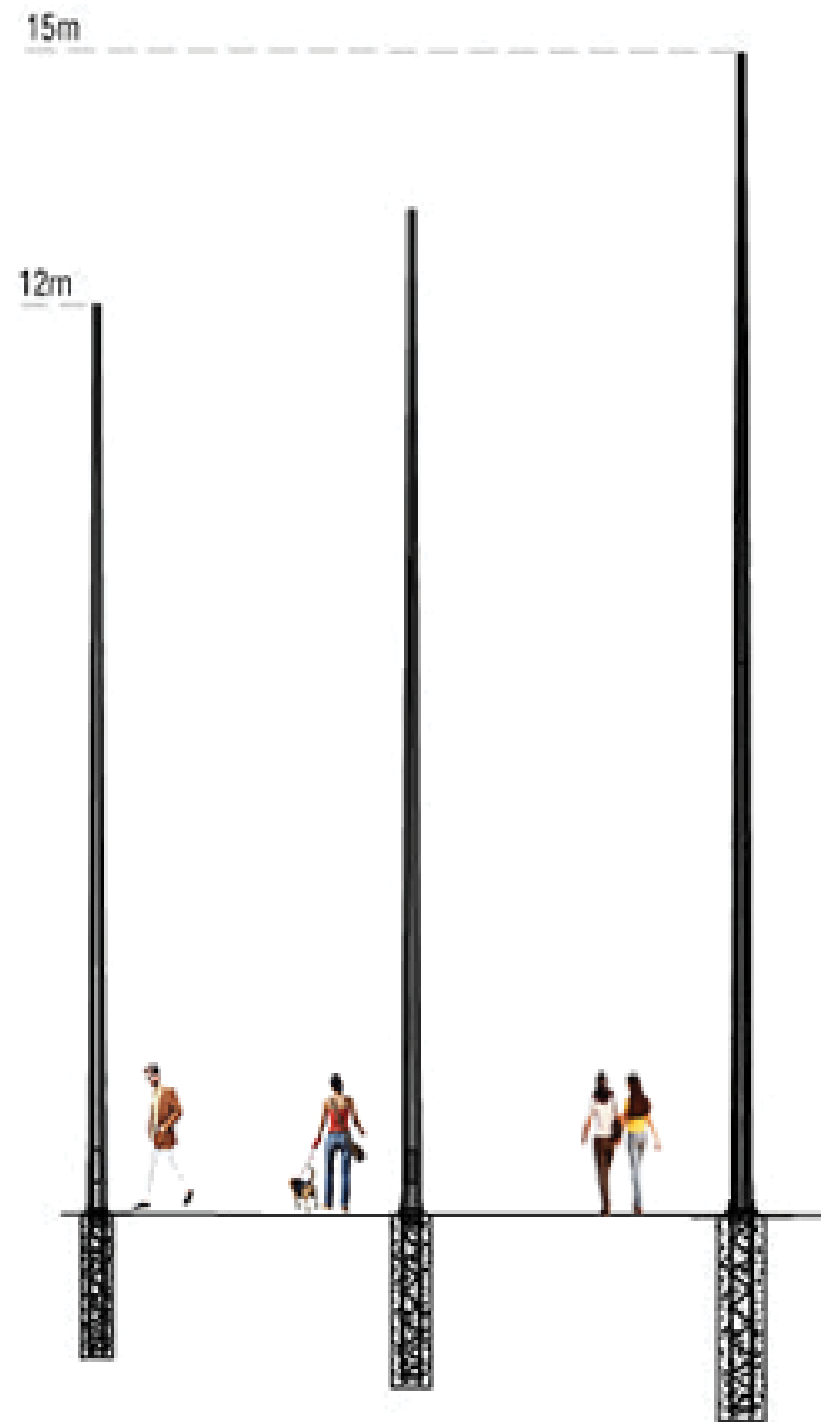
Thorn Champion Pro 264L 2666818



Philips Lighting - Optivision LED Gen 2 525



Gerard Lighting - Sylvalia Briteline Raptor



Tapered hexagonal poles.
12-15m height.

LUMINAIRE OPTIONS

- Philips Lighting - Optivision LED Gen 2 525
- Thorn Champion Pro 264L 2666818
- Gerard Lighting - Sylvalia Briteline Raptor

The outdoor courts will be lit to suit low level competition/ training and mid-level competition.

Low level: 100 lux

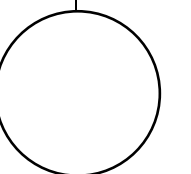
Mid level: 200 lux

All lighting will be LED, for energy efficiency.

Recommend 4000K LED with CRI (Colour Rendering Index) of 65+.

The design will ensure glare does not exceed value of 50.

Nominal pole heights will be 12-15M using tapered hexagonal type poles. Poles to be supplied with lightning protection.





Car Parks & Landscaping

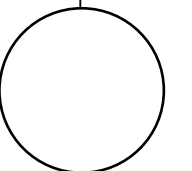
Bayside Netball Centre



WOOD & GRIEVE ENGINEERS

[illegible]

Specialist Lighting Concepts





Bayside Netball Centre



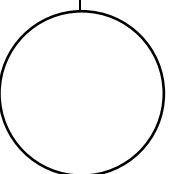
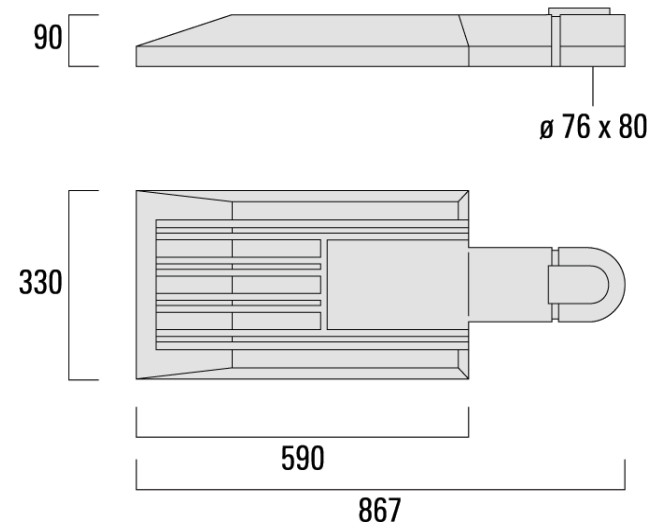
WE-EF PFL 500 series

Lighting for the car parks to provide uniform levels of light throughout the lot. Lighting levels to comply with Australian Standards as well as allow visitors to walk comfortably and drive safely.

The luminaires suggested have a simple, minimal design which doesn't interfere - yet contrasts - with the organic shapes created by the landscaping.

3000k colour temperature, full cut-off luminaires for "dark sky" light spill control.

Nominal pole heights will be 8m for car park, and 6m for pedestrian pathways.



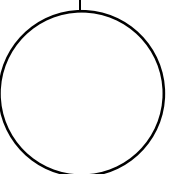


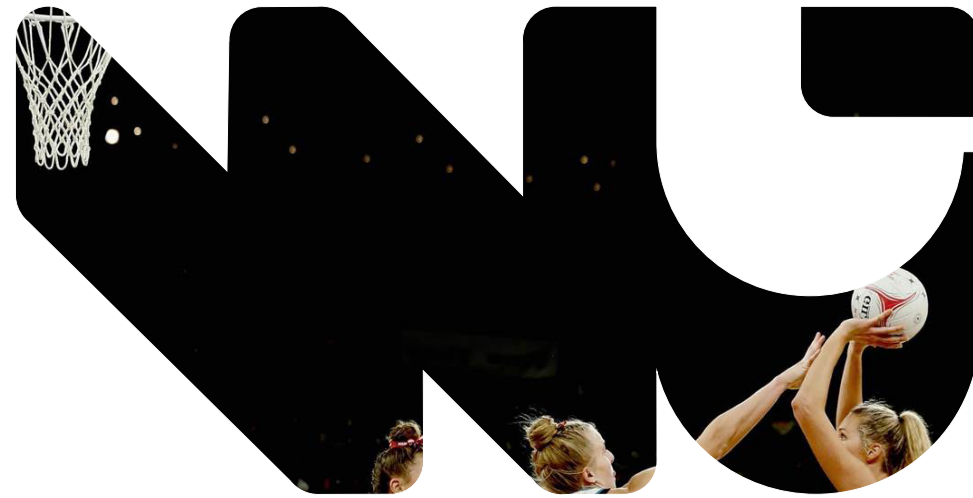
Obtrusive Light Compliance Report

Bayside Netball Centre



Bayside Netball Centre





Bayside Netball Centre

WGE Specialist Lighting Preliminary Concept Report

Date: 26.06.2019 | Revision 001-D