

OVERALL IMPLEMENTATION PLAN

CULTURAL HERITAGE

Indigenous and European cultural heritage must be protected during masterplan implementation, and on sites where major ground breaking work are involved a due diligence Cultural Heritage Assessment will be undertaken.

FERDINANDO GARDENS

- ① Protect the existing park furniture, trees and lawns associated with the historic gardens from overuse by personal trainers and fitness groups. (H)
- ② Establish new handrails to both sides of the beach access ramp and upgrade fencing at the upper lookout. (M)
- ③ Improve all ability access to the ramp from Small Street pedestrian crossing and Hampton Station by sealing the existing unsealed path link in sand coloured concrete. (M)
- ④ Upgrade the existing Octopus Garden Playspace providing a new water play splash pad, improved beach access and shade shelter with integrated seating and picnic tables. (L) Refer Detail Plan C



DRAWING KEY

- BAY TRAIL (SEALED)
- COASTAL WALKING TRAIL (UNSEALED)
- SECONDARY WALKING PATH
- SEA WALL PATH
- BEACH ACCESS RAMPS
- BEACH ACCESS STAIRS
- RESTRICTED VEHICLE ACCESS
- PUBLIC OFF STREET CAR PARK
- PEDESTRIAN CROSSING LIGHTS
- INFORMAL PEDESTRIAN CROSSINGS
- EXISTING FENCING
- EXISTING PUBLIC TOILET
- NEW PUBLIC TOILET
- BEACH SHOWERS

COAST WALKING PATH

- ⑤ Install low key directional and 'code of conduct' signage at key entry points and intersections on the coast walking path to emphasis the path is for walkers not cyclists or high performance training athletes operating at high speeds.
- ⑥ Liaise with DELWP during beach renourishment works to extend existing rock work and formalise high tide all ability path access from the end of the existing sea wall path through to the Linacre Road stairs and Sandringham dog beach. (H)
- ⑦ Establish a new drinking fountain and dog drinking bowl with overflow base providing water for native wildlife at the top of the Linacre Road stairs. (L)

HAMPTON BEACH

- ⑧ Install signage at each beach access point indicating ramp grade/condition with directions to better access points as staged handrail upgrades are completed. (H)
- ⑨ Install new all ability hand rail to both sides of existing beach access ramp north of HLSC. (H)
- ⑩ Reconfigure storm water flows into the low lying sand dunes/ephemeral soaks (opposite Orlando Street) to enable surface runoff from Beach Road to inflow into these ephemeral soaks to improve water quality treatment prior to discharge to the beach. (L)

HAMPTON LIFE SAVING CLUB

- ⑪ Relocate the existing beach shower and drinking fountain at Hampton Life Saving Club to the beach side and provide a second shower closer to the public toilet facilities/change room. (M) Refer Detail Plan B

BRIGHTON BEACH

- ⑫ Realign the Bay Trail to the edge of The Esplanade at South Road to improve safety at the former Tramway underpass and main beach access. (H)
- ⑬ Establish two signed accessible parking bays and line mark and sign a designated shared pedestrian access through the B5 car park. (H)
- ⑭ Longer term investigate options to widen the confined section of Bay Trail to 3.5m using a cantilevered boardwalk with new handrail to the beach side. (M)
- ⑮ Establish orientation and directional signage for new visitors at South Road. (H)
- ⑯ Install handrails to both sides of the existing Green Point ramp (M)
- ⑰ Establish a low profile skillion roof shade shelter with integrated timber seating to improve sun protection for beach users below South Road and Hampton Life Saving Club. (M)
- ⑱ Install new timber seats along the sea wall path (M)
- ⑲ Establish a new 3.5m wide concrete maintenance access and all ability access ramp at New Street with handrails to both sides and bike racks at beach level on the rock groyne side of the seawall path. (M)
- ⑳ Liaise with Melbourne Water investigate options to mitigate flooding and establish a Gross Pollutant Trap and storm water harvesting system for the New Street drain outfall. Works to include installation of large underground storage tank in the open grass area between New Street and Mair Street to improve sustainability of irrigation at Brighton Beach Oval. (L)
- ㉑ Assessment completed as part of the *Bayside Public Toilet Strategy 2012*, recommended the establishment of a new public toilet facility on the foreshore in the vicinity of New Street.

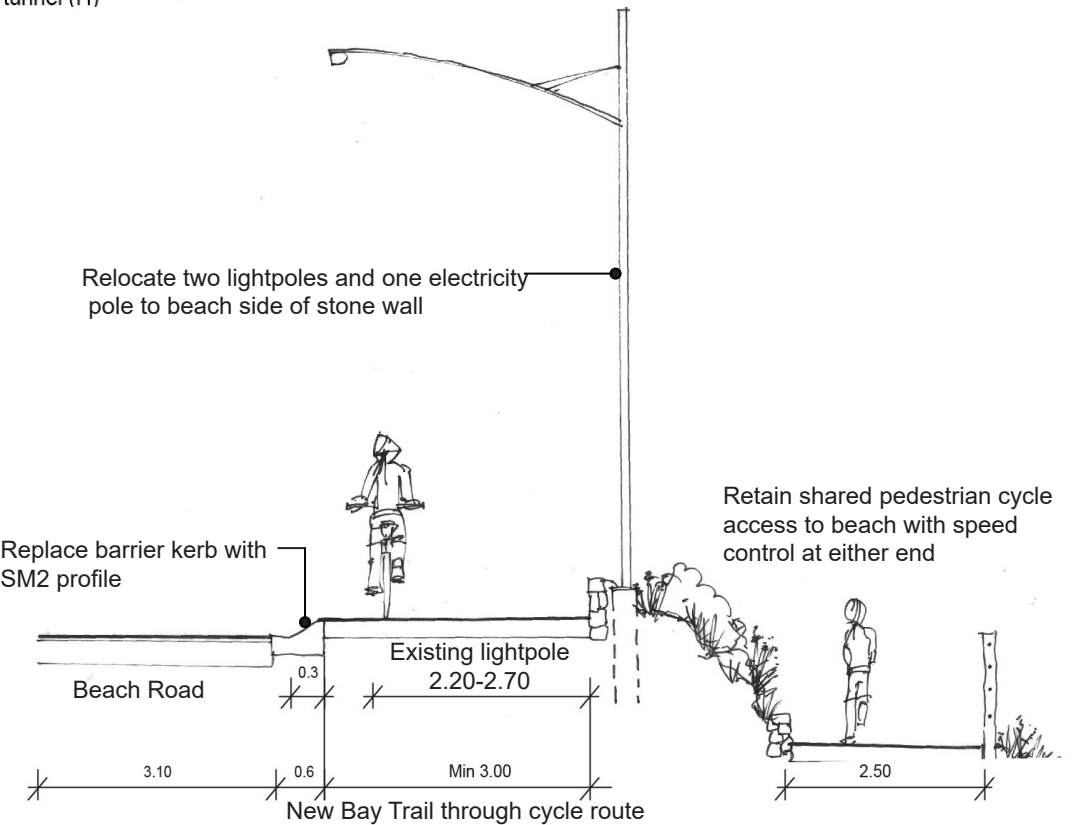
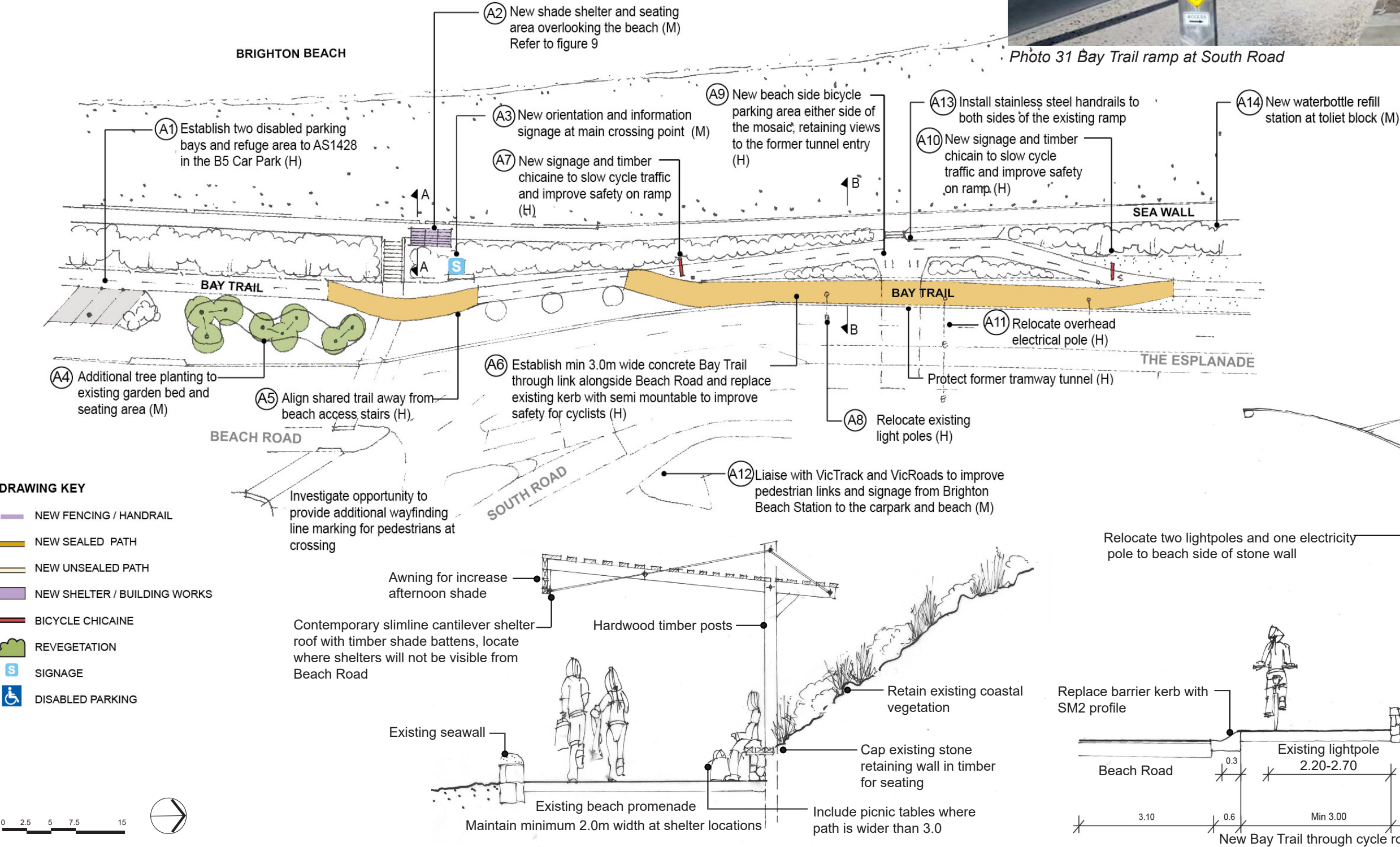


Figure 8: Implementation Plan

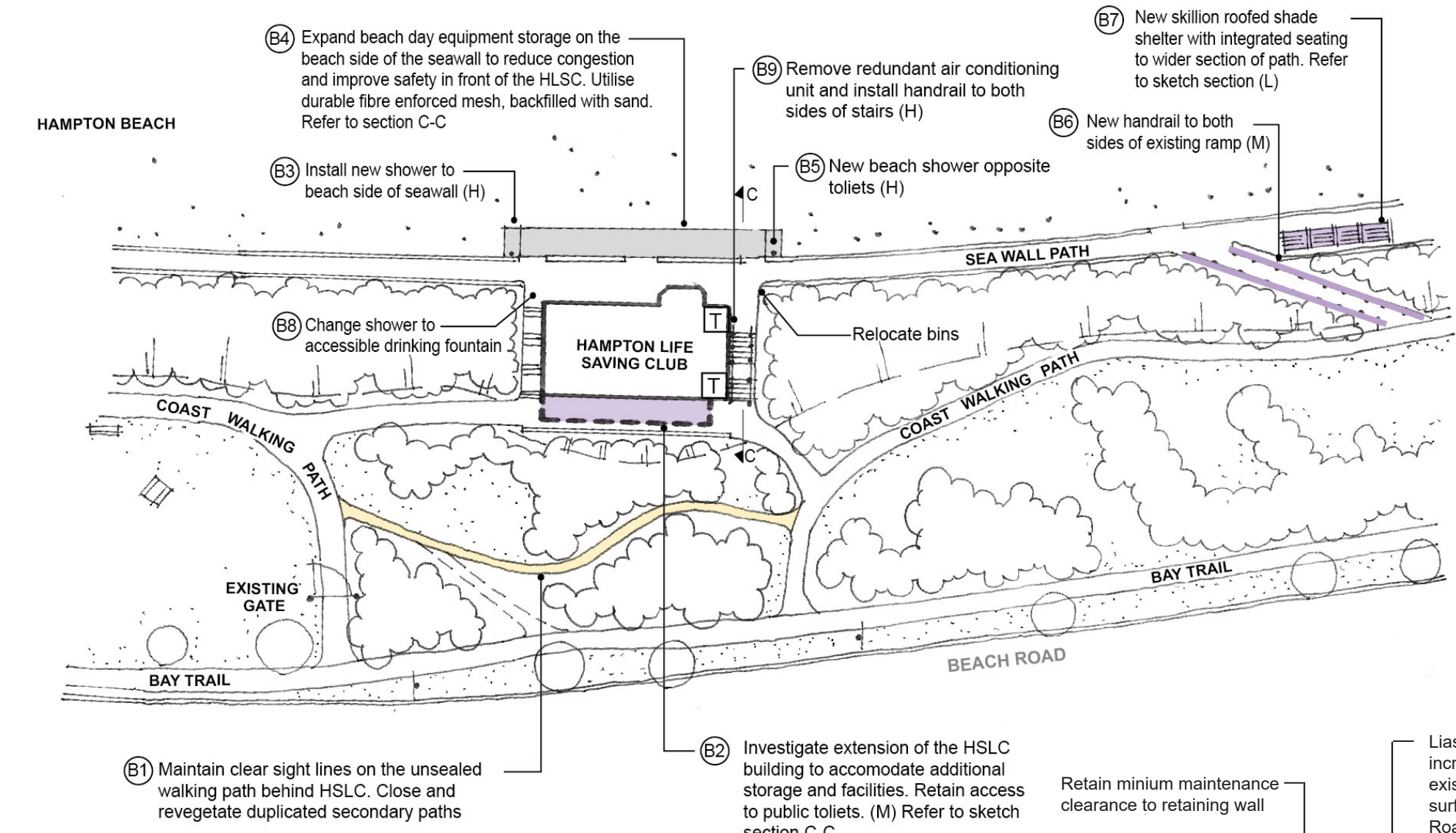
DETAIL PLAN A. BAY TRAIL SOUTH ROAD



Photo 31 Bay Trail ramp at South Road



DETAIL PLAN B. HAMPTON LIFE SAVING CLUB



- DRAWING KEY**
- NEW FENCING / HANDRAIL
 - NEW SEALED PATH
 - NEW UNSEALED PATH
 - NEW SHELTER / BUILDING WORKS
 - NEW FRP SURFACE
 - BICYCLE CHICAINE
 - REVEGETATION
 - NEW ROCK SEAWALL
 - NEW STAIRS
 - SIGNAGE



Photo 31: Rear of Hampton Life Saving Club

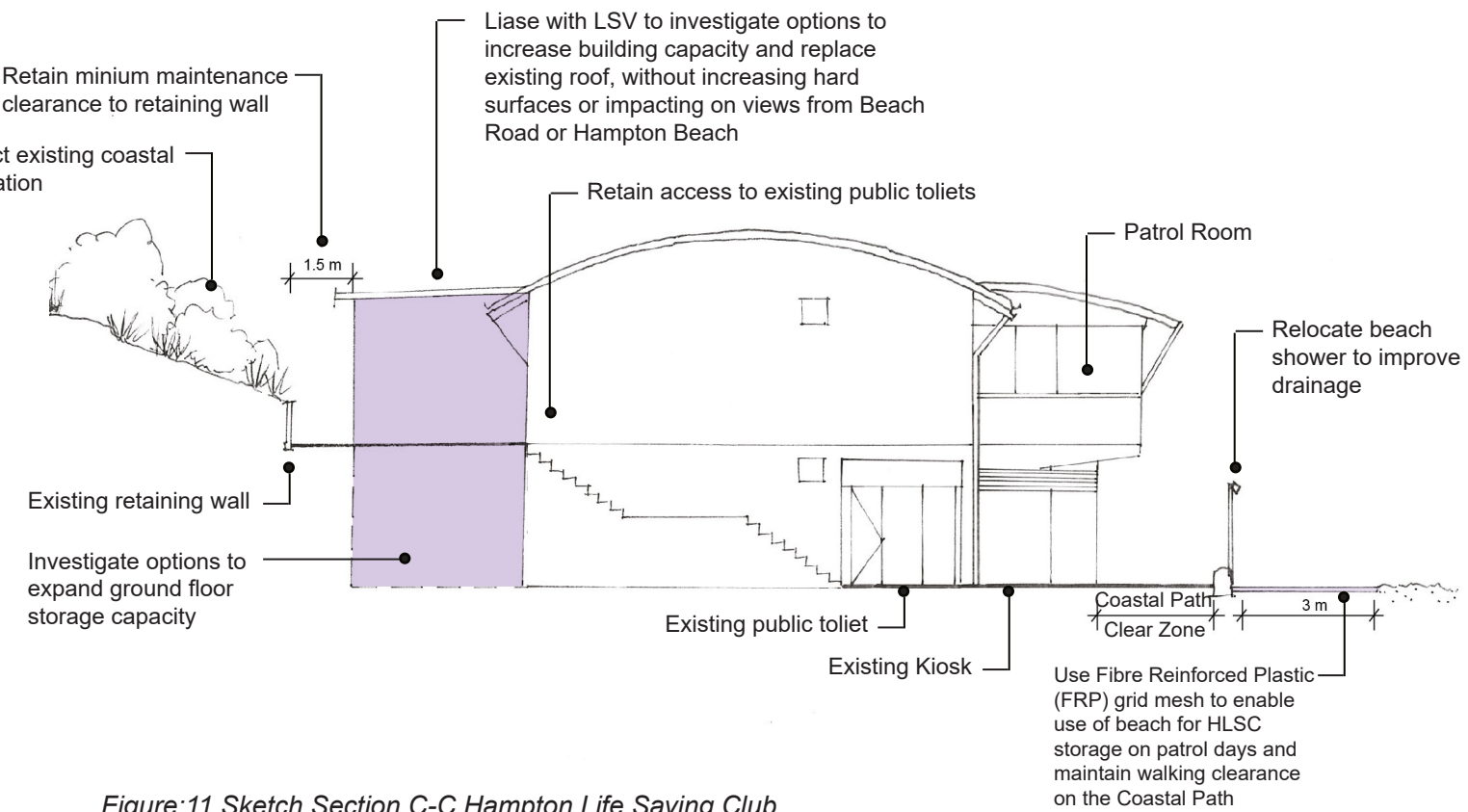


Figure:11 Sketch Section C-C Hampton Life Saving Club



Photo 32: Congestion in the front of the Hampton Life Saving Club

DETAIL PLAN C. FERDINANDO GARDENS

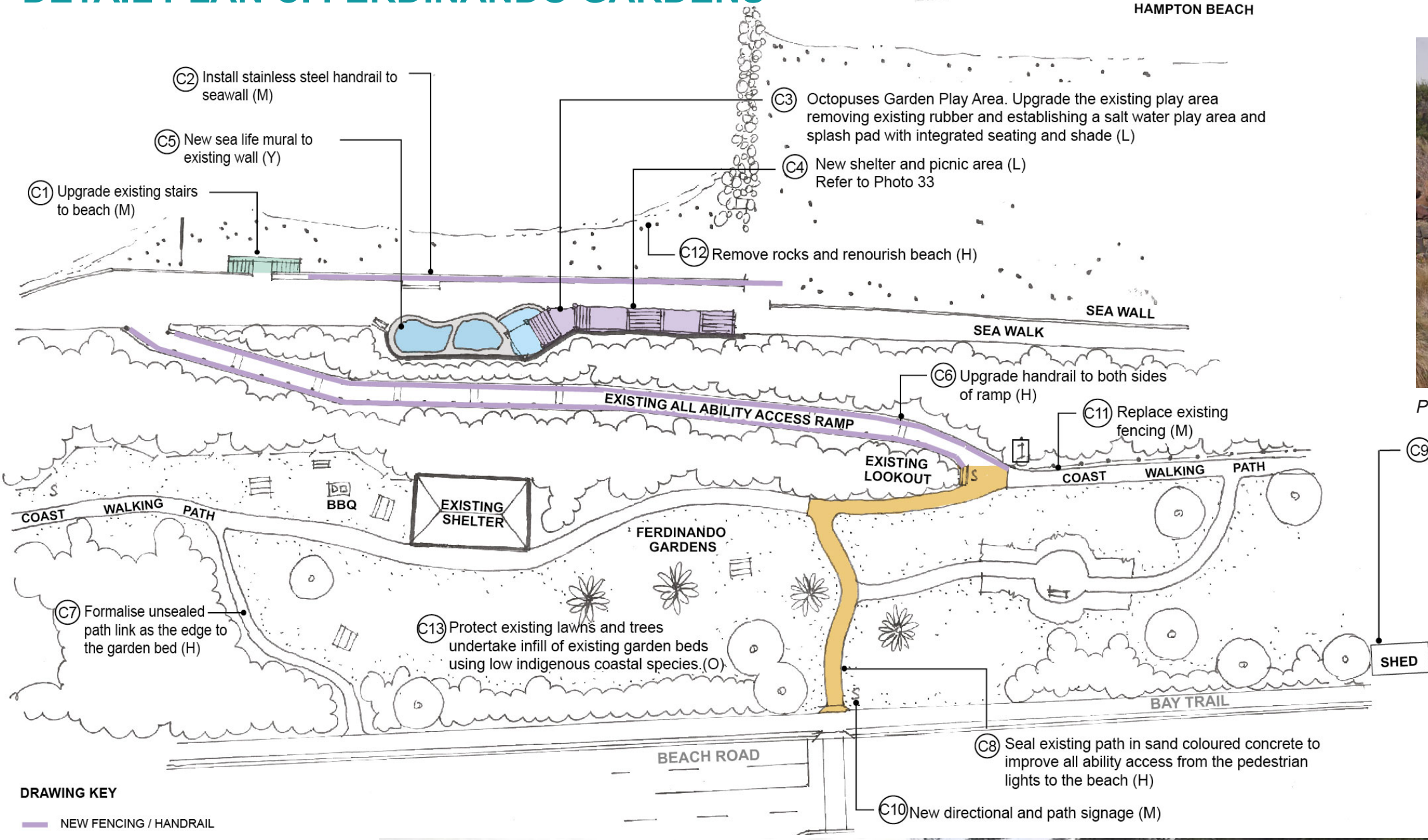


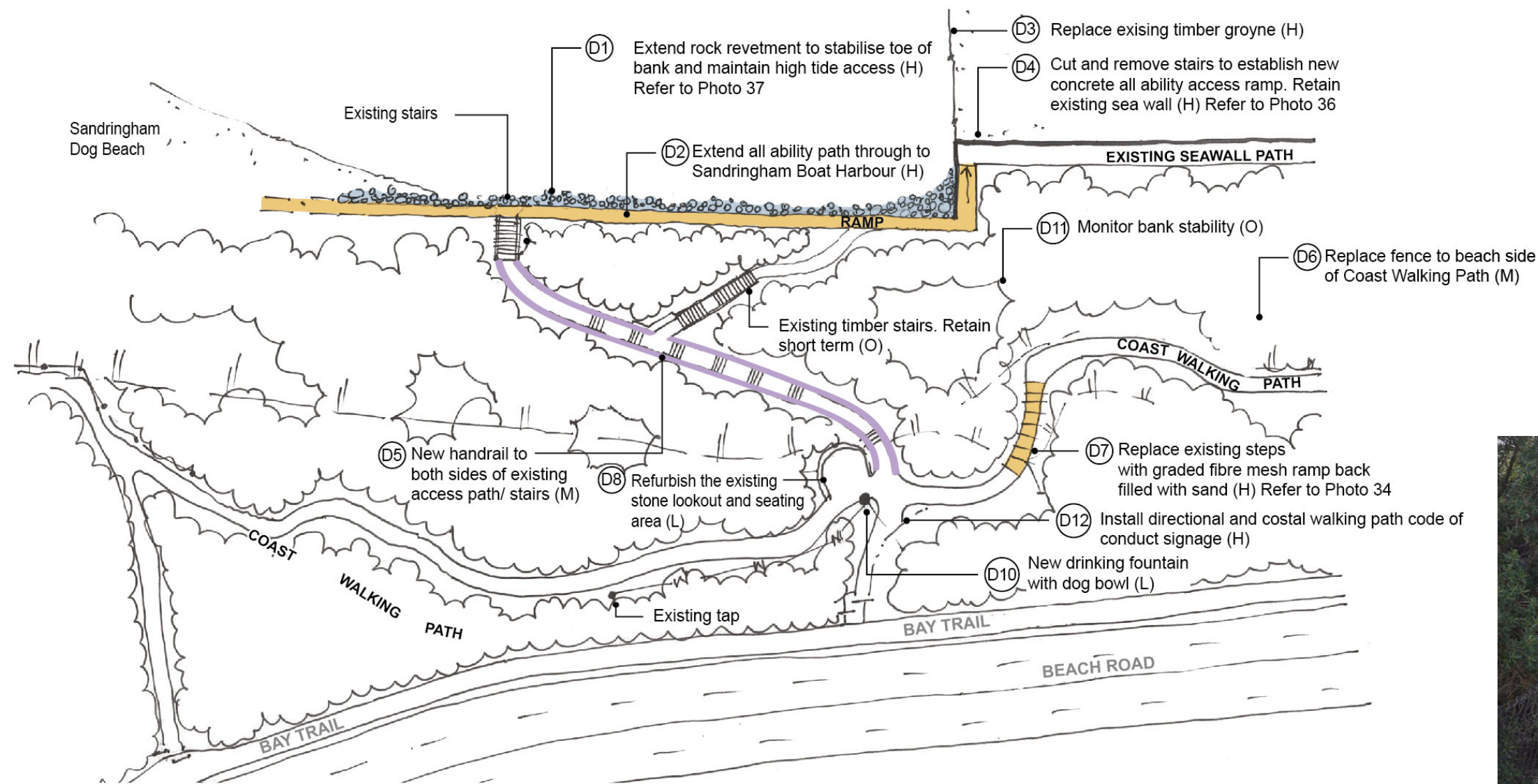
Photo 33: Sea wall shade and seating area

- C9 Permanently close the brick former gardeners shed, reset edging to enable future widening of the Bay Trail to 3.0m and reduce height of adjoining vegetation in accordance with recommendations of the conservation management plan to maintain clear sightlines. (M)
- Continue management of the gardens with accordance to existing Conservation Management Plan C (Tract 2013) including:
- Maintain the landscape character of the Gardens, including the indigenous plantings and open lawn areas.
 - Maintain and as appropriate restore the existing site facilities, including the shelter and associated picnic facilities
 - Continue to involve the community in the management and maintenance of the Gardens



Photo 34: Octopus Garden Play / Splash pool and water play area

DETAIL PLAN D. LINACRE ROAD



- DRAWING KEY**
- NEW FENCING / HANDRAIL
 - NEW SEALED PATH
 - NEW UNSEALED PATH
 - NEW SHELTER / BUILDING WORKS
 - NEW FRP SURFACE
 - BICYCLE CHICAINE
 - REVEGETATION
 - NEW ROCK SEAWALL
 - NEW STAIRS
 - SIGNAGE



Photo 35: Stairs to be replaced in coast walking path



Photo 36: Linacre Road Steps



Photo 37: End of existing sea wall path



Photo 38: Future high tide path link to Sandringham Boat Harbour