

# OVERALL IMPLEMENTATION PLAN

## COASTAL WALKING TRAIL

Consistent with BCMP (2014) maintain a compacted granitic gravel/sand walking path up to 2.5m in width (site specific), inclusive of pruning to either side.

- 1 Establish additional timber chicanes and signage to restrict cyclist access and install 'code of conduct' signage to emphasise the need to consider wildlife, protection of vegetation and other users when passing. (H)
- 2 Remove chain mesh construction fencing and replace with timber post and cable fencing to restrict access to the former beach access ramp. (H)
- 3 Retain fencing to the coast side of path only using more natural log edging to define the trail alignment. Replace timber post and cable fencing where required. (H)
- 4 Establish a new handrail and advisory signage on the steep sealed path section between Harold Street and Edward Street. (M)

## BAY TRAIL - SHARED PATH

- 5 Replace and widen the timber boardwalk and retaining wall section south of Red Bluff Street. (M)
- 6 Widen the path at the pedestrian crossing point at the traffic lights between Masfield Avenue and Royal Avenue. (L)
- 7 Investigate widening of the cantilevered boardwalk section of Harold Street and Edward Street. (L)

## BEACH ACCESS

- 8 Install signage at each beach access point indicating ramp grade/condition with directions to preferred access points as staged upgrades are completed. (H)

- 9 Sims Street Access Ramp - Establish stainless steel handrails to AS1428 on both sides and investigate establishment of a beach shower and bike parking at beach level. (M)
- 10 Southey Street Access Ramp - Establish handrail to the other side with a rest point and seat midway along the ramp. (L)
- 11 Royal Avenue Stairs - Remove the timber log steps and upgrade the unsealed path from Beach Road to the top of the stairs and replace the drinking fountain. (M)
- 12 Edward Street Access Ramp - Install warning and directional signage at beach level directing visitors to the ramp and indicating that there is no safe access via the beach to Half Moon Bay. (H)
- 13 Edward Street Access Ramp - Resurface the existing ramp and establish two flat rest points with seats. Install new handrails to both sides. (M)

## LOOKOUTS AND VIEWING AREAS

- 14 Undertake staged replacement of coastal cliff fencing establishing new timber post and cable fencing with maintenance anchor points where possible to assist safety when completing weed control and planting on the steep cliffs. (H)

- 15 Establish a new lookout point and seating area at Southey Street. (L)
- 16 Establish a new lookout point and seating area at Red Bluff Street. (L)

## TOILETS

- 17 Install signage within the B12 car park and at the pedestrian lights to alert visitors to the nearest public toilet at Southey Street. (H)
- 18 Replace the Southey Street toilet to provide accessible male and female cubicles within a smaller contemporary facility at the same location. (M)

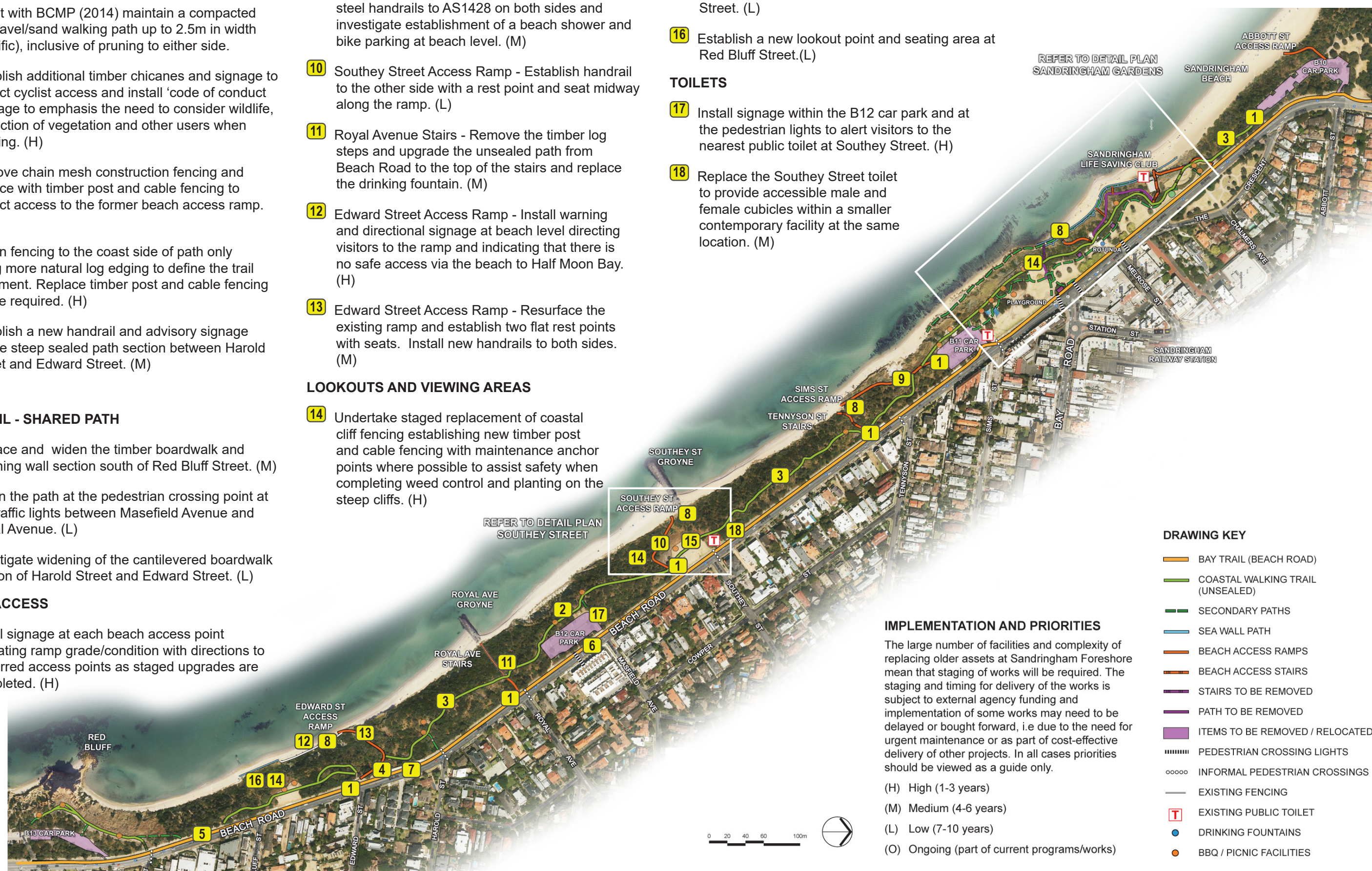


Figure 6. Implementation Plan



# SANDRINGHAM GARDENS DETAIL PLAN

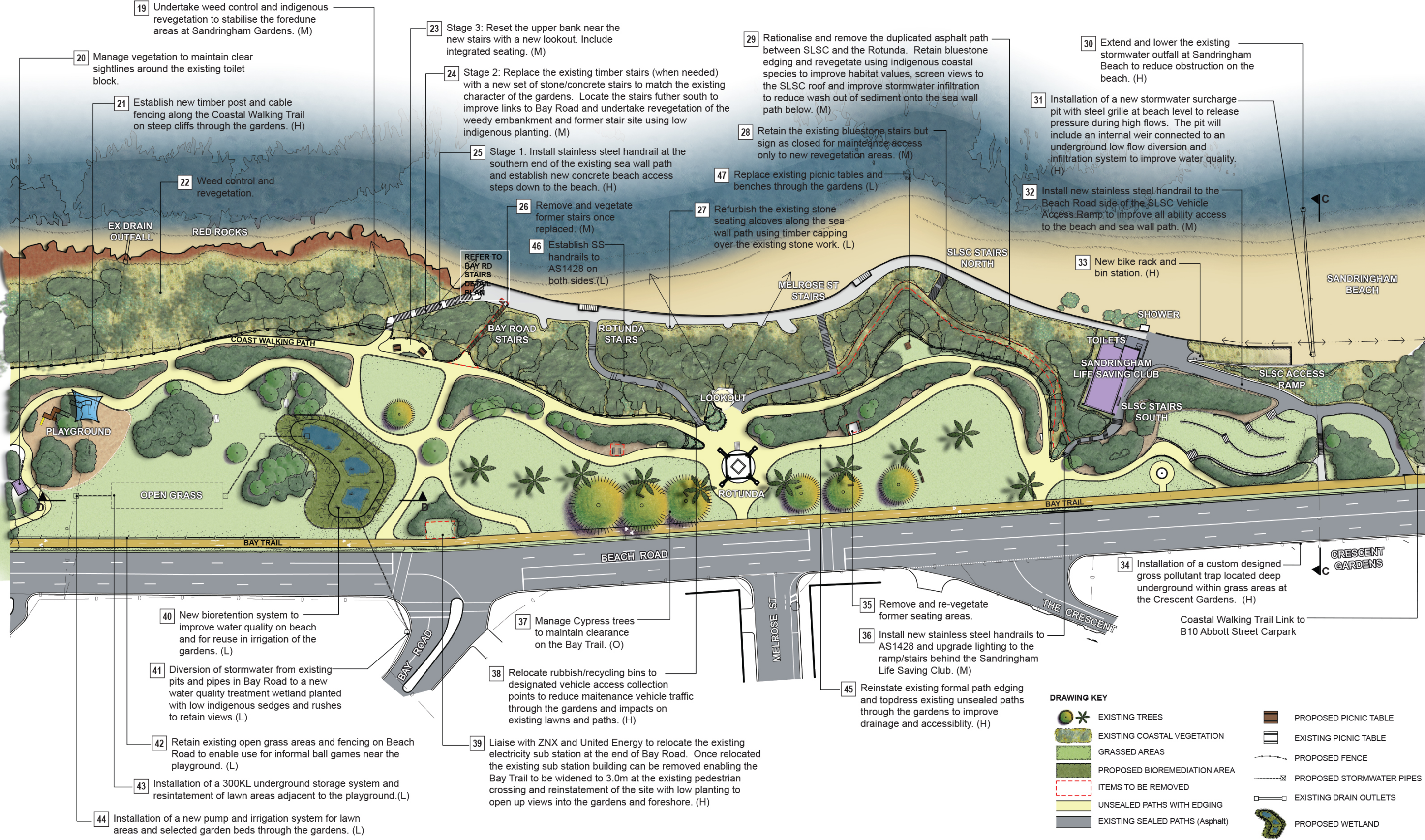


Figure 7. Sandringham Gardens Detail Plan



# SANDRINGHAM BEACH OUTFALL SECTION C - C



Photo 40: Sandringham Beach Outfall

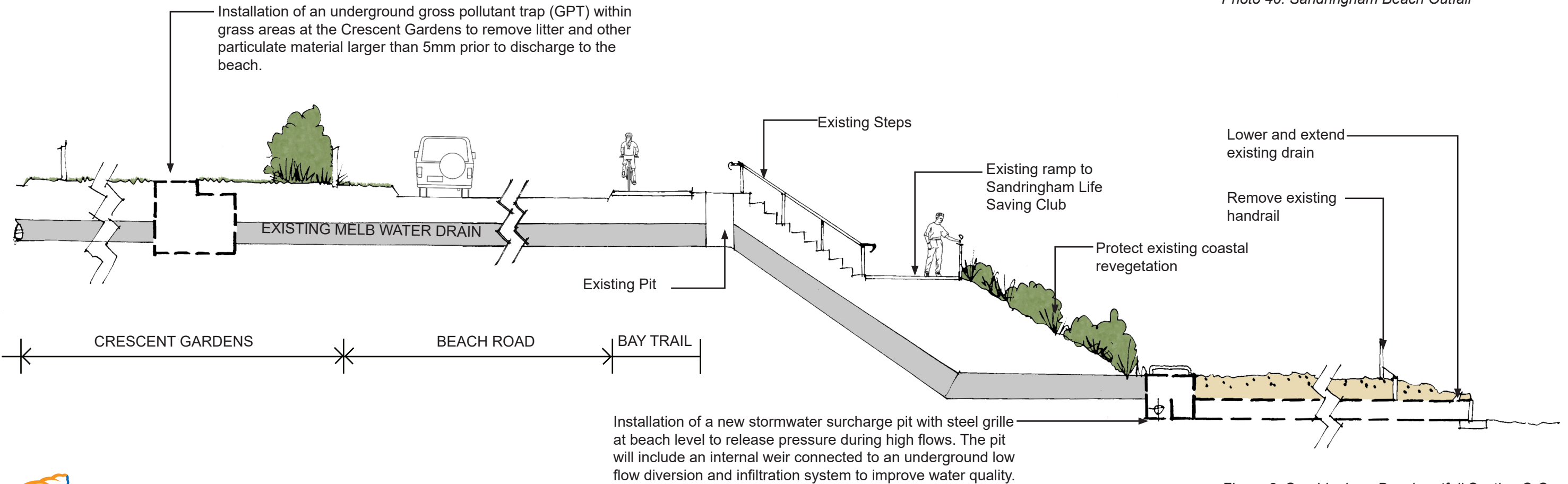


Figure 8. Sandringham Beach outfall Section C-C



# BAY ROAD STAIRS TREATMENT DETAIL PLAN

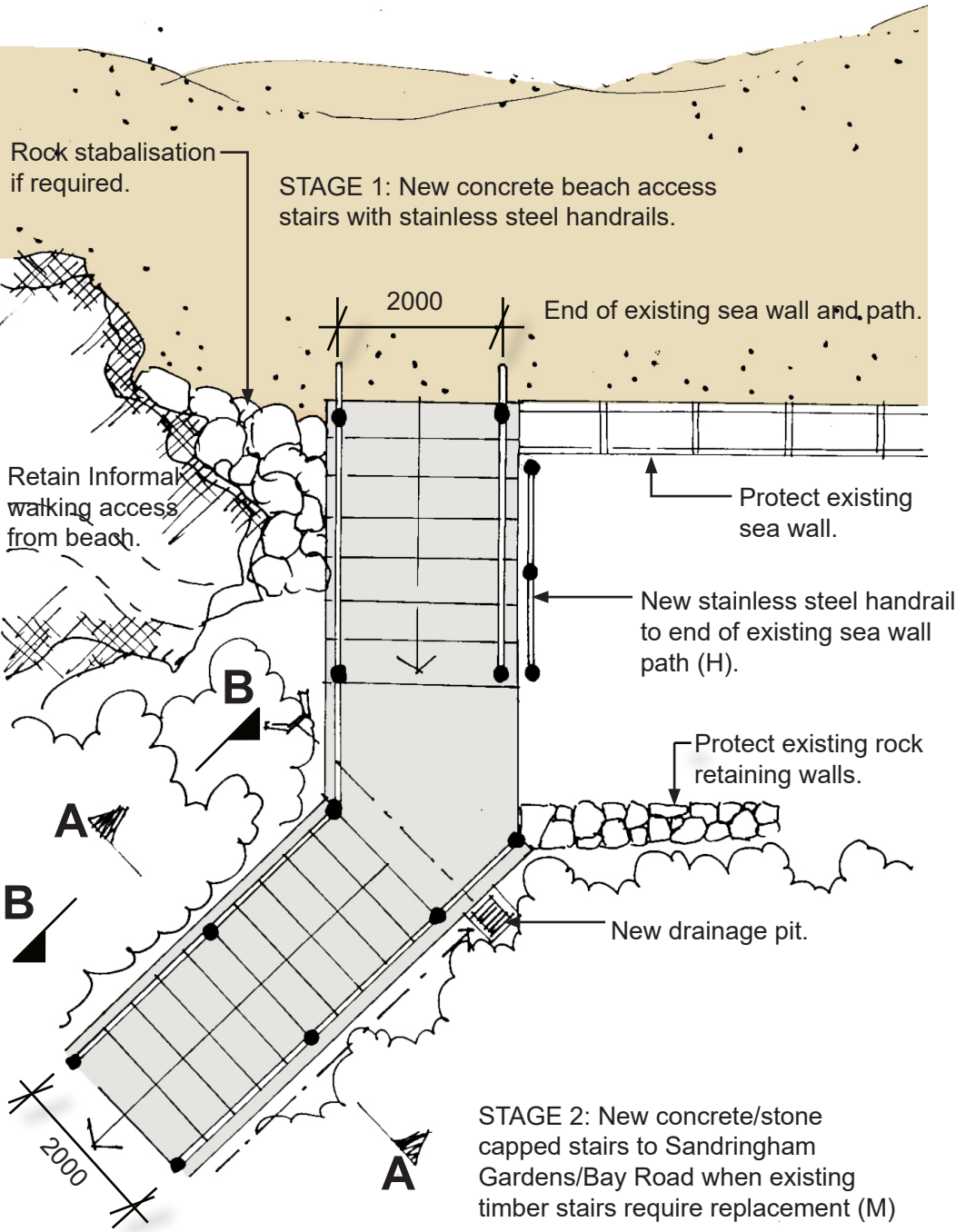


Figure 9. New Bay Road Stairs.

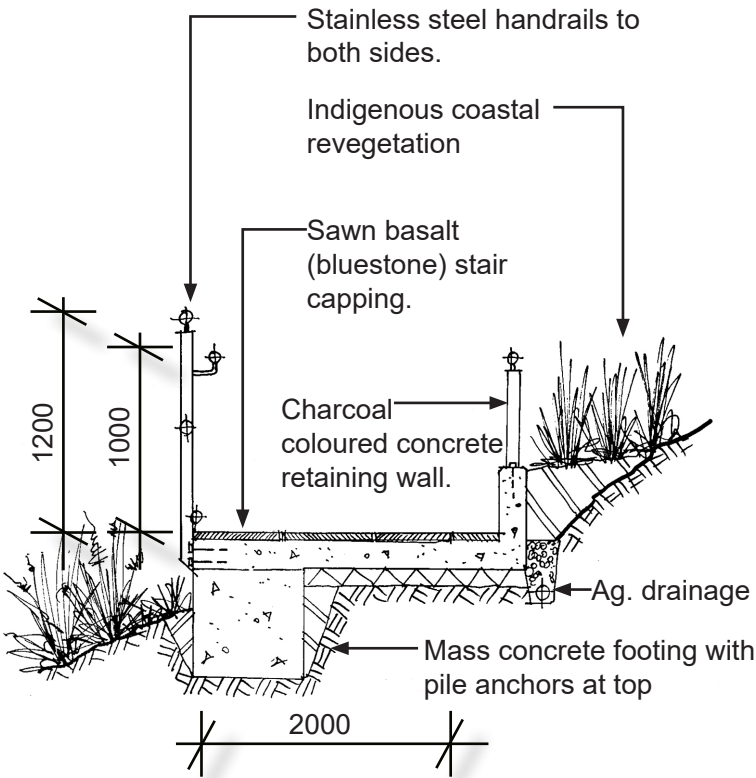


Figure 10. Typical Cross Section A-A

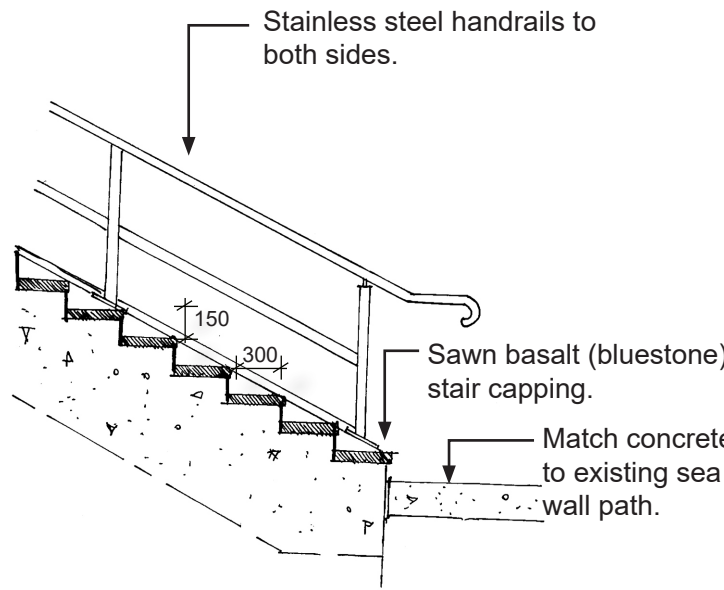


Figure 11. Typical Cross Section B-B



Photo 41. Existing Bay Road Stairs



Photo 42. New Stairs location



# SANDRINGHAM GARDENS WETLAND TREATMENT SECTION D-D



*Photo 43: Sandringham Gardens*

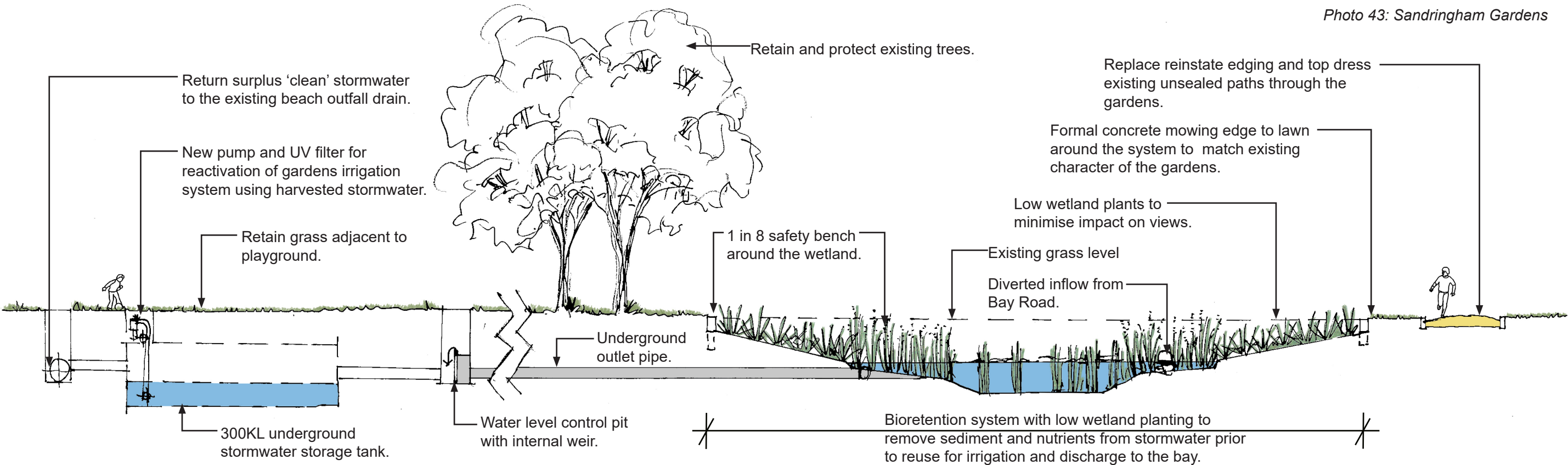


Figure 12. Sandringham Gardens Bioretention system



# SOUTHEY STREET DETAIL PLAN



Photo 44: Southey Street Future Bioremediation Area.

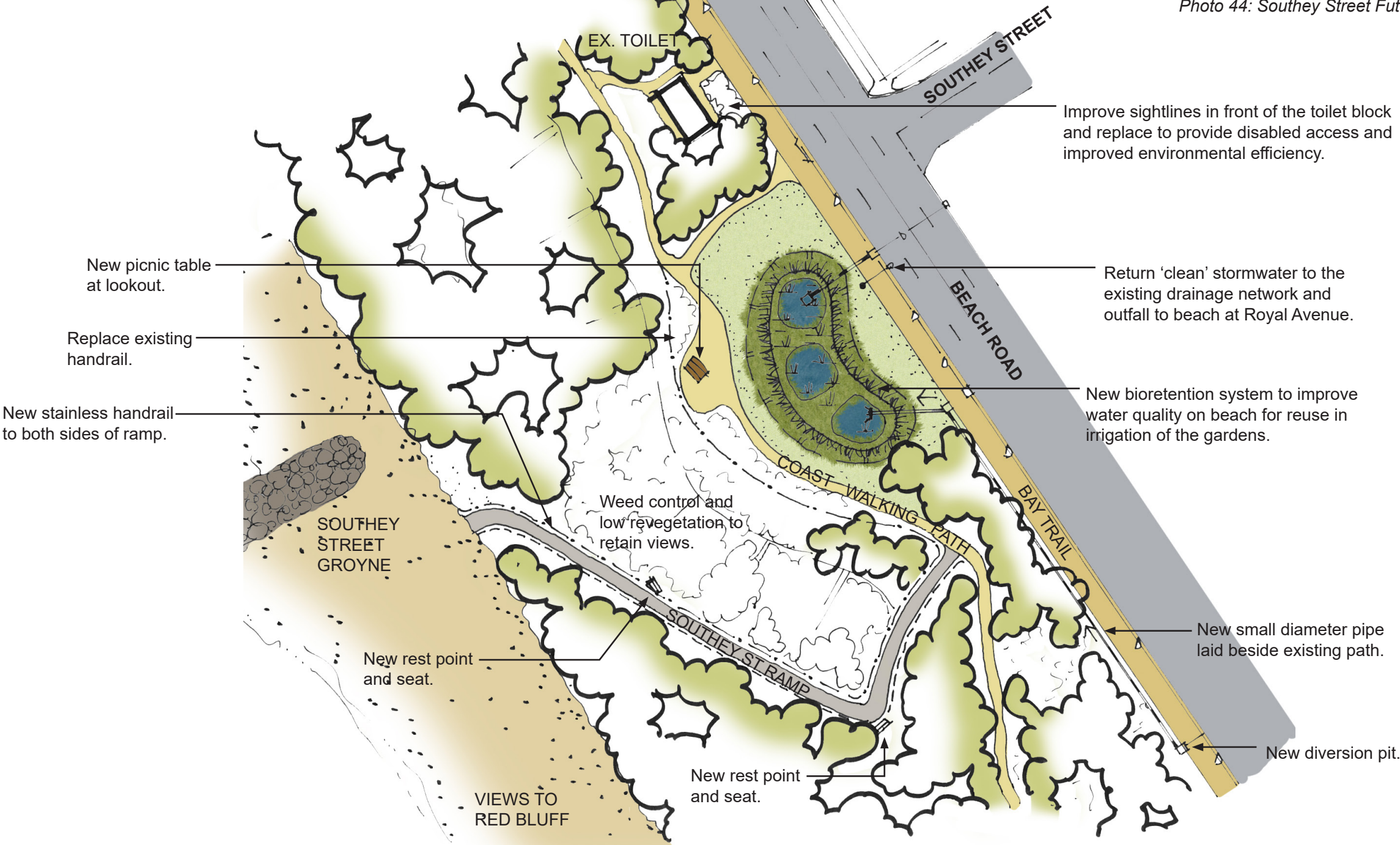


Figure 13. Southey Street Bioretention System